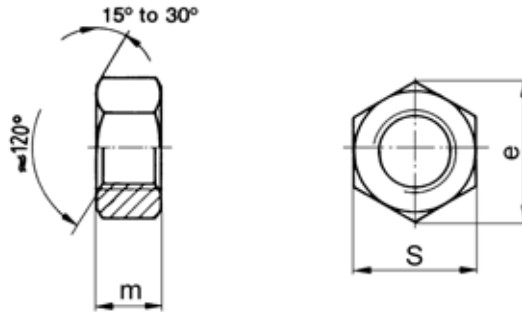


<b>HEXXX</b> (DIN934)	<b>六角螺帽</b> <b>Hexagon Nut</b>	Admetus 2003.09.01
--------------------------	-----------------------------------	-----------------------



tel: 852-27535133 fax 852-27530053 www.admetus.com.hk

尺寸編號 Size Code	螺紋尺寸 (d) Thread Size	牙距 (P) Pitch	牙距 Pitch		S		m		e
			P <sub>1</sub>	P <sub>2</sub>	最大 (名義) Max. (Nom)	最小 Min	最大 (名義) Max. (Nom)	最小 Min	最小 Min
010025	M1	0.25	-	-	2.5	2.4	0.8	0.55	2.71
012025	M1.2	0.25	-	-	3	2.9	1	0.75	3.28
014030	M1.4	0.3	-	-	3	2.9	1.2	0.95	3.28
016035	M1.6	0.35	-	-	3.2	3.02	1.3	1.05	3.41
020040	M2	0.4	-	-	4	3.82	1.6	1.35	4.32
025045	M2.5	0.45	-	-	5	4.82	2	1.75	5.45
026045	(M2.6)	0.45			5	4.82	2	1.75	5.45
030050	M3	0.5	-	-	5.5	5.32	2.4	2.15	6.01
035060	M3.5	0.6	-	-	6	5.82	2.8	2.55	6.58
040070	M4	0.7	-	-	7	6.78	3.2	2.9	7.66
050080	M5	0.8	-	-	8	7.78	4	3.7	8.79
060100	M6	1	-	-	10	9.78	5	4.7	11.05
070100	M7	1	-	-	11	10.73	5.5	5.2	12.12
080125	M8	1.25	1	-	13	12.73	6.5	6.14	14.38
100150	M10	1.5	1	1.25	17	16.73	8	7.64	18.9
120175	M12	1.75	1.5	1.25	19	18.67	10	9.64	21.1
140200	M14	2	1.5	-	22	21.67	11	10.3	24.49
160200	M16	2	1.5	-	24	23.67	13	12.3	26.75
180250	M18	2.5	1.5	2	27	26.16	15	14.3	29.56
200250	M20	2.5	2	1.5	30	29.16	16	14.9	32.95
220250	M22	2.5	1.5	2	32	31	18	16.9	35.03
240300	M24	3	2	-	36	35	19	17.7	39.55
270300	M27	3	2	-	41	40	22	20.7	45.2
300350	M30	3.5	2	-	46	45	24	22.7	50.85
330350	M33	3.5	2	-	50	49	26	24.7	55.37
360400	M36	4	3	-	55	53.8	29	27.4	60.79
390400	M39	4	3	-	60	58.8	31	29.4	66.44

<p style="text-align: center;">材質及表面處理編號 Material &amp; surface treatment code</p> <p>LY = 鋼, 鍍彩鋅 steel &amp; yellow zinc plated  LZ = 鋼, 鍍藍鋅 steel &amp; blue zinc plated  LO = 鋼, 氧化黑 steel &amp; black oxide  LN = 鋼, 鍍鎳 steel &amp; nickel plated  LA = 鋼, 磷化黑 steel &amp; black phosphate  SX = 不鏽鋼 stainless steel 304</p>	<p style="text-align: center;">產品編號例子 Part no. example 尺寸 size: M10 x 1.50 (d x p)</p> <p style="text-align: center;">FNLY-HEXXX-100150</p> <p style="text-align: center;">材質及表面處理編號 material &amp; surface treatment code</p>
--	--

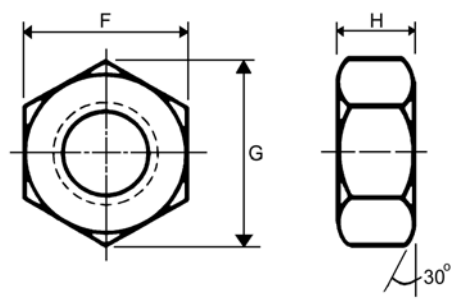
註 Remarks:

- 1) 規格 Specification: DIN 934 , except M2.6 除外
- 2) 機械性能級別 Property class: 6 (最小 min.)
- 3) 公差等級 Product grade:  $\leq M16 = A$  ,  $\geq M18 = B$
- 4) 牙距 pitch : P = 粗牙 coarse thread (一般用 general use) , P1 / P2 = 幼牙 fine thread
- 5) 查詢 Enquiry: Admetus tel 852-27535133 fax 852-27530053 www.admetus.com.hk
- 6) 標記示例 Designation example: **M10 x 1.5, 六角螺帽, DIN934, 鋼, 鍍彩鋅**  
**M10 x 1.5, Hexagon Nut, DIN934, steel, yellow zinc plated**

Document no. FN - HEXXX

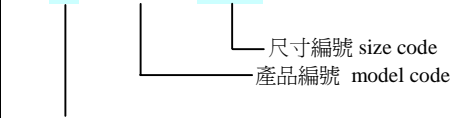
頁 Page: n - 001 - 1

<b>HEXXX</b> (ANSI)	<b>六角螺帽</b> <b>Hexagon Nut</b>	Admetus 2003.09.01
------------------------	-----------------------------------	-----------------------



tel: 852-27535133 fax 852-27530053 www.admetus.com.hk 單位unit: 寸Inch

尺寸編號 Size Code	螺紋尺寸 (d) Thread Size	牙距 (P) Pitch	F			G		H		
			基準 Basic	最大 Max.	最小 Min	最大 Max.	最小 Min	最大 Max.	最小 Min	
90080	0	80	5/32	0.156	0.150	0.180	0.171	0.050	0.043	
90164	1	64	5/32	0.156	0.150	0.180	0.171	0.050	0.043	
90172	1	72	5/32	0.156	0.150	0.180	0.171	0.050	0.043	
90256	2	56	3/16	0.188	0.180	0.217	0.205	0.066	0.057	
90264	2	64	3/16	0.188	0.180	0.217	0.205	0.066	0.057	
90348	3	48	3/16	0.188	0.180	0.217	0.205	0.066	0.057	
90356	3	56	3/16	0.188	0.180	0.217	0.205	0.066	0.057	
90440	4	40	1/4	0.250	0.241	0.289	0.275	0.098	0.087	
90448	4	48	1/4	0.250	0.241	0.289	0.275	0.098	0.087	
90540	5	40	5/16	0.312	0.302	0.361	0.344	0.114	0.102	
90544	5	44	5/16	0.312	0.302	0.361	0.344	0.114	0.102	
90632	6	32	5/16	0.312	0.302	0.361	0.344	0.114	0.102	
90640	6	40	5/16	0.312	0.302	0.361	0.344	0.114	0.102	
90832	8	32	11/32	0.344	0.332	0.397	0.378	0.130	0.117	
90836	8	36	11/32	0.344	0.332	0.397	0.378	0.130	0.117	
91024	10	24	3/8	0.375	0.362	0.433	0.413	0.130	0.117	
91032	10	32	3/8	0.375	0.362	0.433	0.413	0.130	0.117	
91224	12	24	7/16	0.438	0.423	0.505	0.482	0.161	0.148	
91228	12	28	7/16	0.438	0.423	0.505	0.482	0.161	0.148	
91620	1/4	20	7/16	0.438	0.423	0.505	0.482	0.193	0.178	
91628	1/4	28	7/16	0.438	0.423	0.505	0.482	0.193	0.178	
92018	5/16	18	9/16	0.562	0.545	0.650	0.621	0.225	0.208	
92024	5/16	24	9/16	0.562	0.545	0.650	0.621	0.225	0.208	
92416	3/8	16	5/8	0.625	0.607	0.722	0.692	0.257	0.239	
92424	3/8	24	5/8	0.625	0.607	0.722	0.692	0.257	0.239	

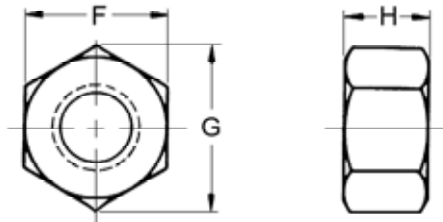
材質及表面處理編號 Material & surface treatment code	產品編號例子 Part no. example 尺寸 size: #4-40
LY = 鋼, 鍍彩鋅 steel & yellow zinc plated LZ = 鋼, 鍍藍鋅 steel & blue zinc plated LO = 鋼, 氧化黑 steel & black oxide LN = 鋼, 鍍鎳 steel & nickel plated LA = 鋼, 磷化黑 steel & black phosphate SX = 不鏽鋼 stainless steel 304	FNLY- <b>HEXXX</b> -90440  材質及表面處理編號 material & surface treatment code

註 Remarks:

- 1) 規格 Specification: ANSI B 18.6.3 1972
- 2) 查詢 Enquiry: Admetus tel 852-27535133 fax 852-27530053 www.admetus.com.hk
- 3) 標記示例 Designation example:
  - A. 尺寸 size  $\leq$  #12 : **#4-40 六角螺帽, ANSI B18.6.3. 1972, 鋼, 鍍彩鋅**  
**#4-40 Hexagon nut, ANSI B 18.6.3 1972, steel, yellow zinc plated**
  - B. 尺寸 size  $\geq$  1/4 : **1/4-20 (7/16 x 0.193"), 六角螺帽, ANSI B18.6.3. 1972, 鋼, 鍍彩鋅**  
**1/4-20 (7/16 x 0.193"), Hexagon nut, ANSI B 18.6.3 1972, steel, yellow zinc plated**

\*  $\geq$  1/4 尺寸時, 要列明 'F' 及 'H' 最大值。  
 if size  $\geq$  1/4, the 'F' & 'H' max are required to show.

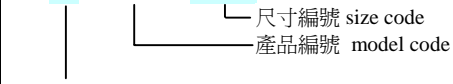
<b>HEXAX</b> (ANSI)	<b>六角螺帽</b> <b>Hexagon Nut</b>	Admetus 2003.09.01
------------------------	-----------------------------------	-----------------------



tel: 852-27535133 fax 852-27530053 [www.admetus.com.hk](http://www.admetus.com.hk)

單位unit: 寸Inch

尺寸編號 Size Code	螺紋尺寸 (d) Thread Size	牙距 (P) Pitch	F			G		H		
			基準 Basic	最大 Max.	最小 Min.	最大 Max.	最小 Min.	基準 Basic	最大 Max.	最小 Min.
91620	1/4	20	7/16	0.438	0.428	0.505	0.488	7/32	0.226	0.212
91628	1/4	28	7/16	0.438	0.428	0.505	0.488	7/32	0.226	0.212
92018	5/16	18	1/2	0.500	0.489	0.577	0.557	17/64	0.273	0.258
92024	5/16	24	1/2	0.500	0.489	0.577	0.557	17/64	0.273	0.258
92416	3/8	16	9/16	0.562	0.551	0.650	0.628	21/64	0.337	0.320
92424	3/8	24	9/16	0.562	0.551	0.650	0.628	21/64	0.337	0.320
92614	7/16	14	11/16	0.688	0.675	0.794	0.768	3/8	0.385	0.365
92620	7/16	20	11/16	0.688	0.675	0.794	0.768	3/8	0.385	0.365
92813	1/2	13	3/4	0.750	0.736	0.866	0.840	7/16	0.448	0.427
92820	1/2	20	3/4	0.750	0.736	0.866	0.840	7/16	0.448	0.427
92912	9/16	12	7/8	0.875	0.861	1.010	0.982	31/64	0.496	0.473
92918	9/16	18	7/8	0.875	0.861	1.010	0.982	31/64	0.496	0.473
93011	5/8	11	15/16	0.938	0.922	1.083	1.051	35/64	0.559	0.535
93018	5/8	18	15/16	0.938	0.922	1.083	1.051	35/64	0.559	0.535
93210	3/4	10	1 1/8	1.125	1.088	1.299	1.240	41/64	0.665	0.617
93216	3/4	16	1 1/8	1.125	1.088	1.299	1.240	41/64	0.665	0.617
93409	7/8	9	1 5/16	1.312	1.269	1.516	1.447	3/4	0.776	0.724
93414	7/8	14	1 5/16	1.312	1.269	1.516	1.447	3/4	0.776	0.724
93608	1	8	1 1/2	1.500	1.450	1.732	1.653	55/64	0.887	0.831
93612	1	12	1 1/2	1.500	1.450	1.732	1.653	55/64	0.887	0.831
93614	1	14	1 1/2	1.500	1.450	1.732	1.653	55/64	0.887	0.831
93707	1 1/8	7	1 11/16	1.688	1.631	1.949	1.859	31/32	0.999	0.939
93708	1 1/8	8	1 11/16	1.688	1.631	1.949	1.859	31/32	0.999	0.939
93712	1 1/8	12	1 11/16	1.688	1.631	1.949	1.859	31/32	0.999	0.939
93807	1 1/4	7	1 7/8	1.875	1.812	2.165	2.066	1 1/16	1.094	1.030
93808	1 1/4	8	1 7/8	1.875	1.812	2.165	2.066	1 1/16	1.094	1.030
93812	1 1/4	12	1 7/8	1.875	1.812	2.165	2.066	1 1/16	1.094	1.030
93906	1 3/8	6	2 1/16	2.062	1.994	2.382	2.273	1 11/64	1.206	1.138
93908	1 3/8	8	2 1/16	2.062	1.994	2.382	2.273	1 11/64	1.206	1.138
93912	1 3/8	12	2 1/16	2.062	1.994	2.382	2.273	1 11/64	1.206	1.138
94006	1 1/2	6	2 1/4	2.250	2.175	2.598	2.480	1 9/32	1.317	1.245
94008	1 1/2	8	2 1/4	2.250	2.175	2.598	2.480	1 9/32	1.317	1.245
94012	1 1/2	12	2 1/4	2.250	2.175	2.598	2.480	1 9/32	1.317	1.245

材質及表面處理編號 Material & surface treatment code	產品編號例子 Part no. example 尺寸 size: 1/4 – 20 (d x p)
LY = 鋼, 鍍彩鋅 steel & yellow zinc plated LZ = 鋼, 鍍藍鋅 steel & blue zinc plated LO = 鋼, 氧化黑 steel & black oxide LN = 鋼, 鍍鎳 steel & nickel plated SX = 不鏽鋼 stainless steel 304	FNL <b>Y</b> -HE <b>X</b> A <b>X</b> -91620  材質及表面處理編號 material & surface treatment code

註 Remarks:

- 1) 規格 Specification: ANSI B18.2.2 1986
- 2) 查詢 Enquiry: Admetus tel 852-27535133 fax 852-27530053 [www.admetus.com.hk](http://www.admetus.com.hk)
- 3) 標記示例 Designation example:
  - A. 尺寸 size  $\leq 3/8$  : 1/4-20 (7/16 x 7/32), 六角螺帽, ANSI B18.2.2. 1986, 鋼, 鍍彩鋅  
 1/4-20 (7/16 x 7/32), Hexagon nut, ANSI B 18.2.2 1986, steel, yellow zinc plated  
 \*  $\leq 3/8$  尺寸時, 要列明 'F' 及 'H' 值  
 if size  $\leq 3/8$ , the 'F' & 'H' are required to show
  - B. 尺寸 size  $\geq 7/16$  : 7/16-14, 六角螺帽, ANSI B18.2.2 1986, 鋼, 鍍彩鋅  
 7/16-14, Hexagon nut, ANSI B 18.2.2 1986, steel, yellow zinc plated